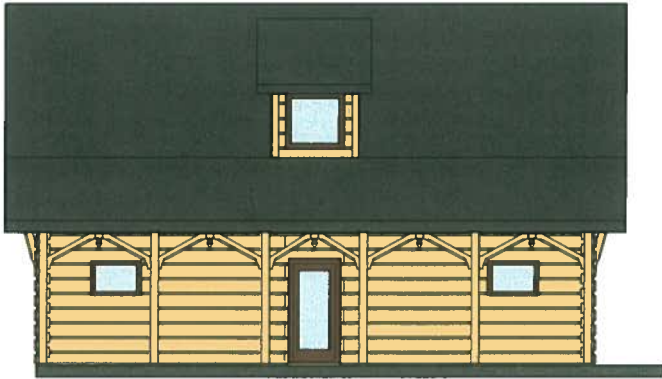




## 'ALPHA'



FRONT ELEVATION



SIDE ELEVATION

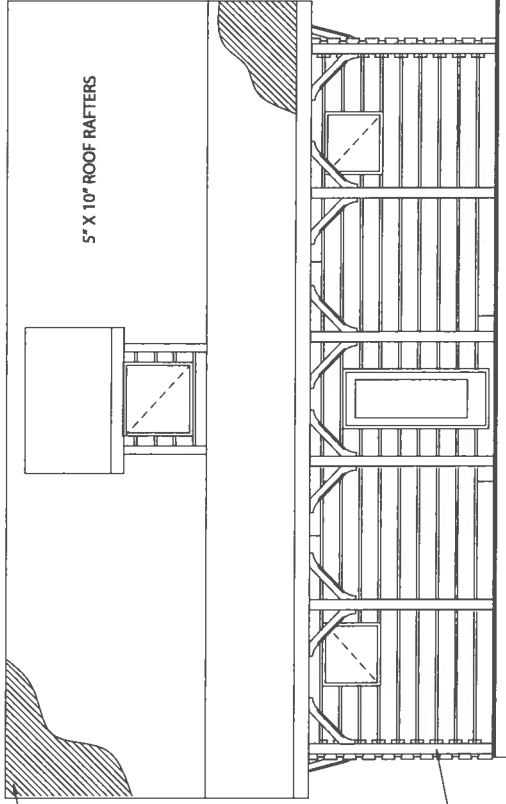
The 'Alpha', is Hennessy Milling's flagship cottage. Constructed from selected, kiln dried, Ontario white pine logs, neatly dovetailed together, and sprinkled with ornament, this romantic little home just bubbles with rustic comfort and charm.

Materials are provided as a kit, ready to assemble, right to the lock-up stage on your pad or foundation (note: the front porch depicted here is optional). Included with all the lumber required for the exterior, roof and loft are: installation hardware, a Vic West insulated roof system, triple glazed vinyl windows and doors, stained and sealed exterior components, and premium elastometric chinking to keep out drafts and accommodate any wood movement. All openings are gasketed and the base cabin includes no vertical posts or constraints to log movement/settlement within the mother walls, thus ensuring a lasting and stable result.

The interior plans below are suggestions only and our skilled designers will do their utmost to help clients reach their design goals as simply and as cost effectively as possible.

Our website, currently under construction, will provide assembly instructions and as much relevant support detail as possible. For more information now, please call Justin Hennessy at (613) 922-6559.

*Hennessy*  
MILLING

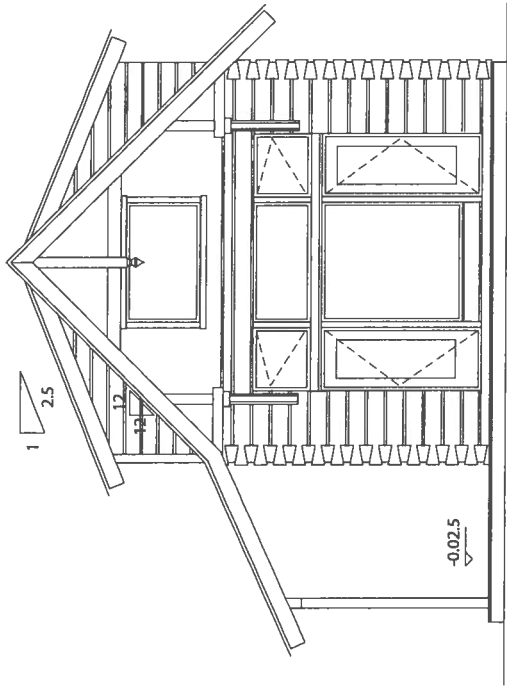


2" X 10" ROOF BOARDS  
STEEL COVERED

5" X 10" ROOF RAFTERS

6" X 6" POST

FRONT ELEVATION



RIGHT ELEVATION

*Jemessy*  
MILLING

LOG HOME "ALPHA"

SCALE 1:100

Sept. 6th, 2018

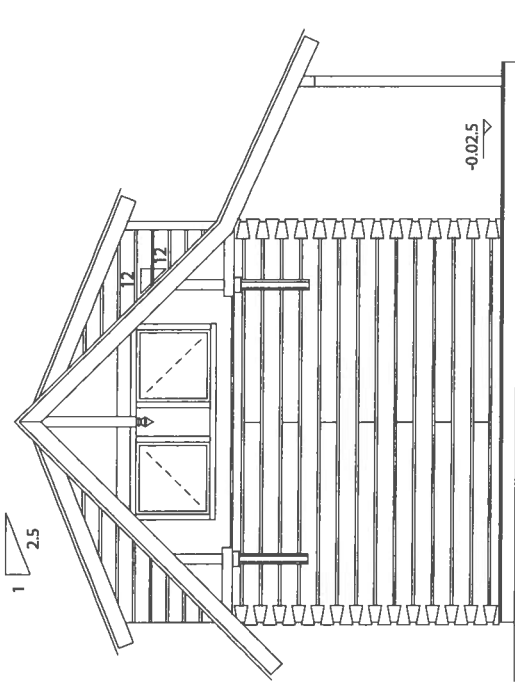
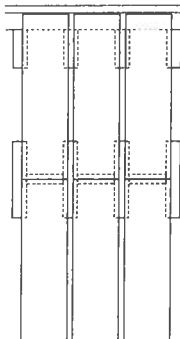


NOTE: logs joined and aligned by splines top and bottom and connected by stubby tenon. Frames are connected to sliders let into log ends.

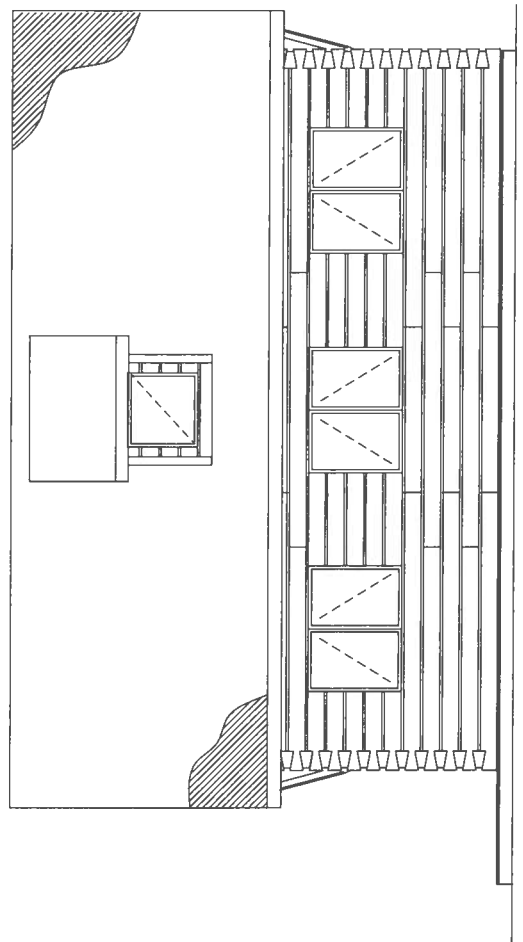
typ. plan view schematic: not to scale



typ. side view schematic: not to scale



LEFT ELEVATION



BACK ELEVATION

*Jemessy*  
MILLING

LOG HOME "ALPHA"

SCALE 1:100

Sept. 6th, 2018

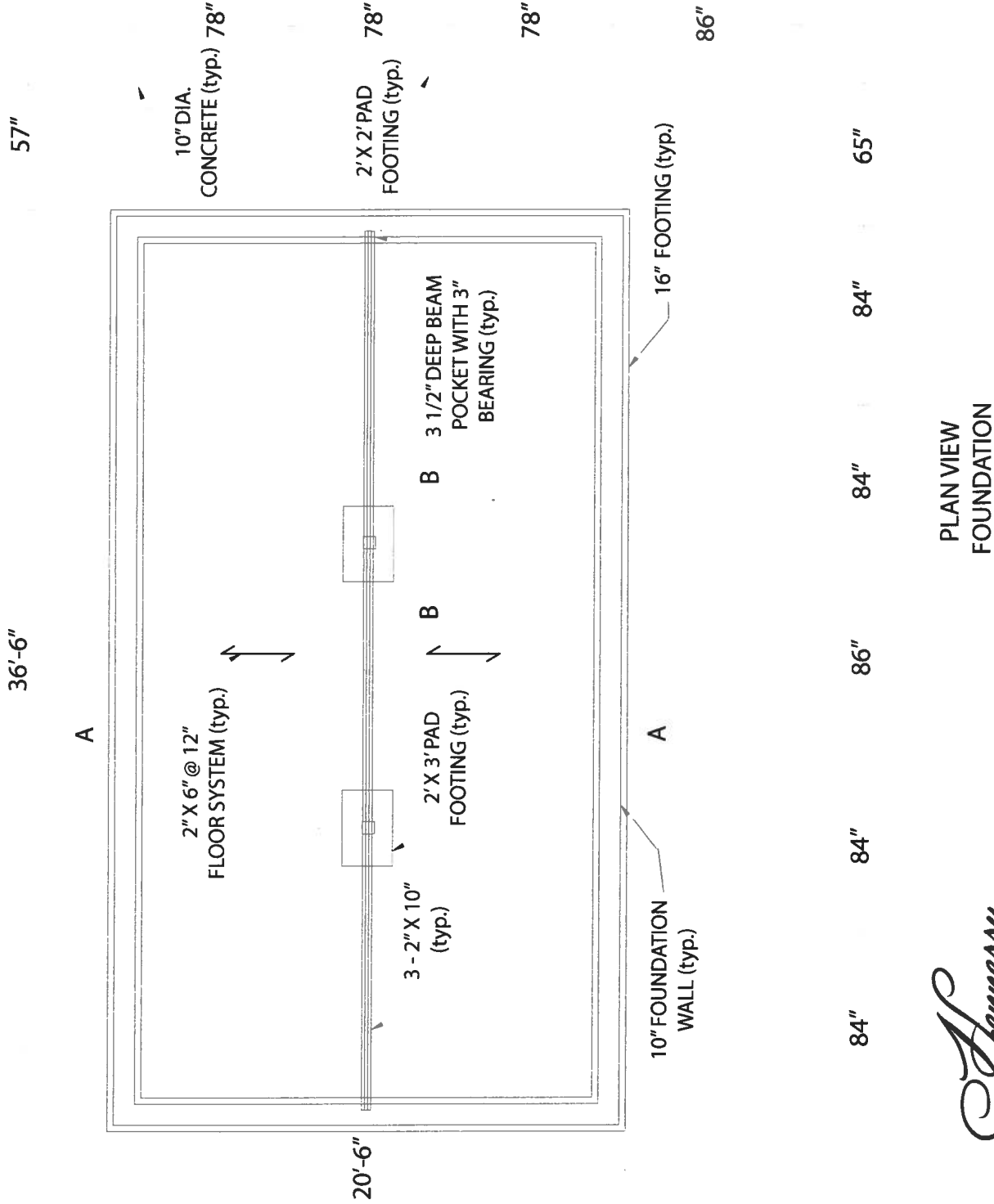


LOG HOME "ALPHA"

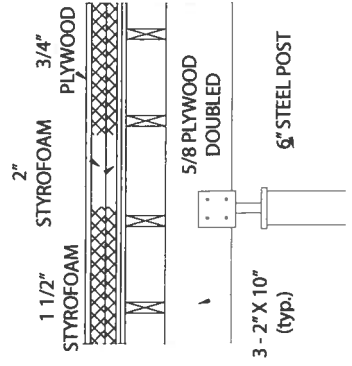
SCALE 1:75



Sept. 6th, 2018



DETAIL B-B



PLAN VIEW FOUNDATION

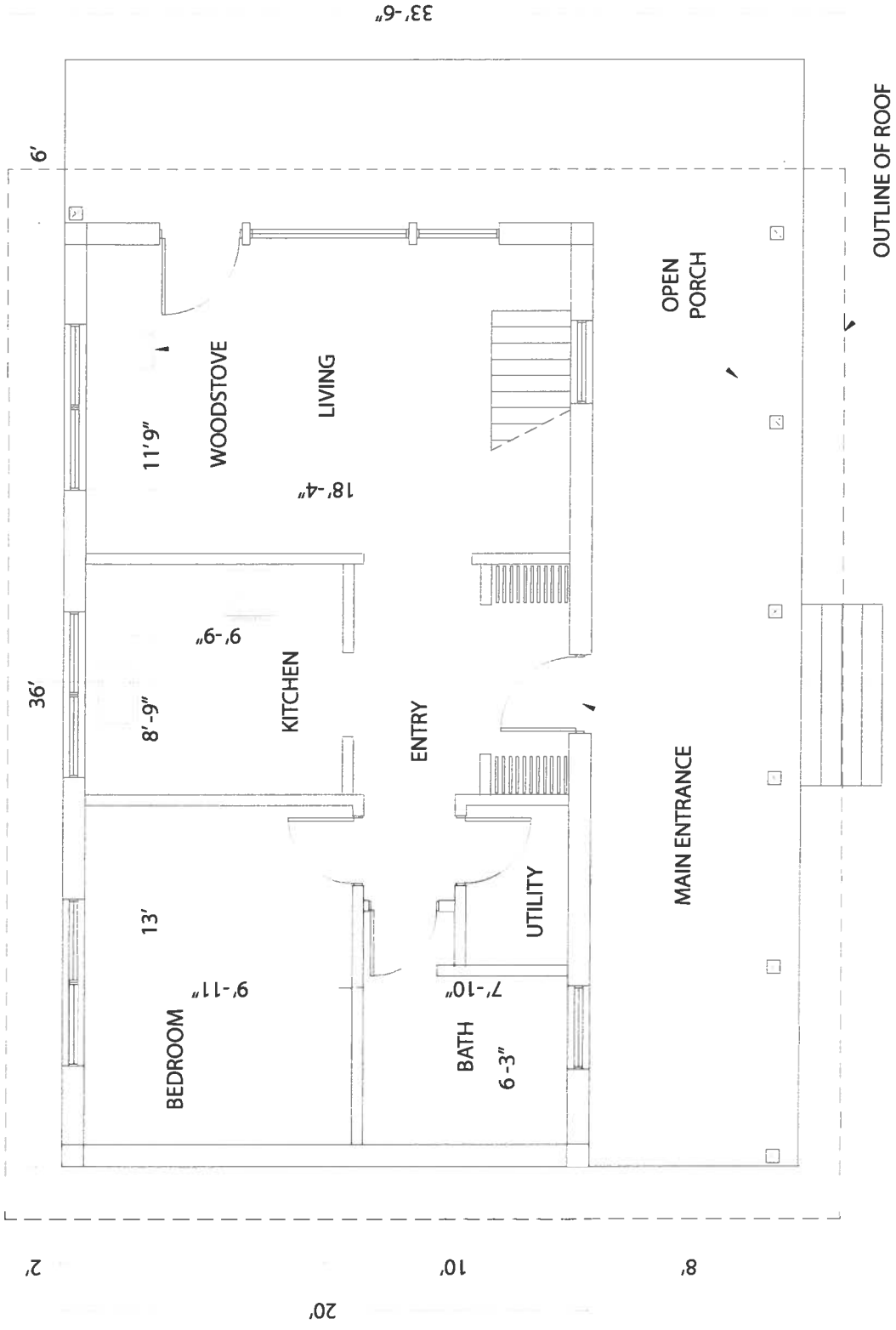


A  
MAIN FLOOR PLAN

LOG HOME "ALPHA"

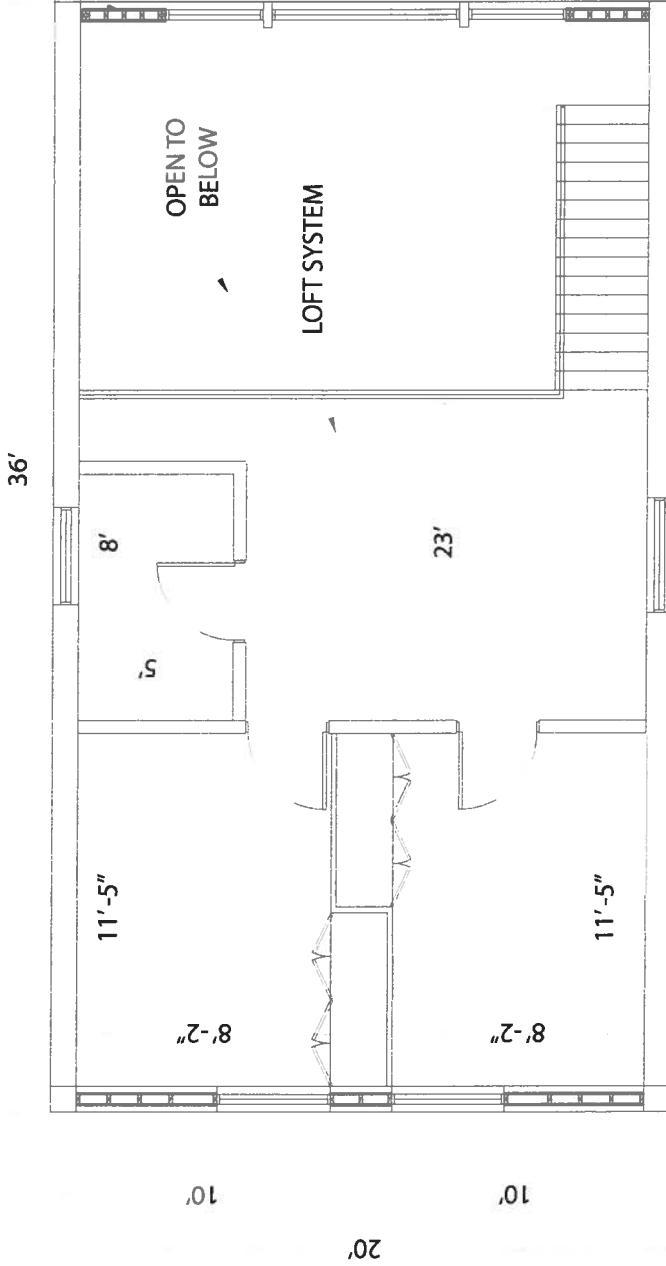
SCALE 1:75

Sept. 6th, 2018

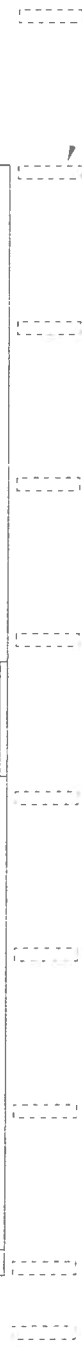


STUD WALL

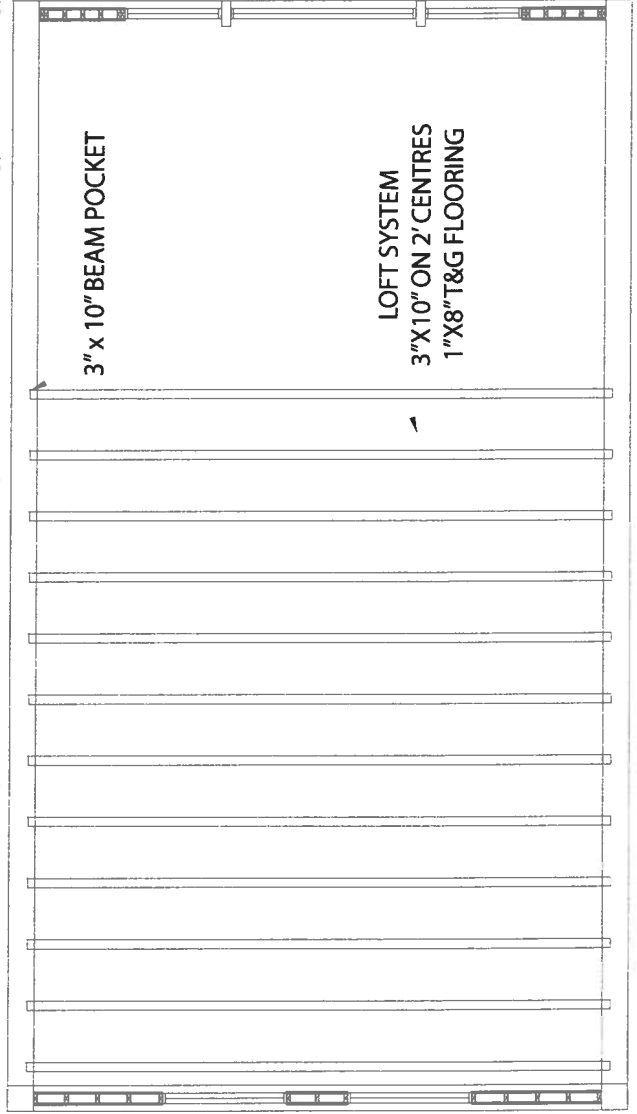
### UPPER FLOOR PLAN



LOCATIONS 5" X 10" ROOF RAFTERS



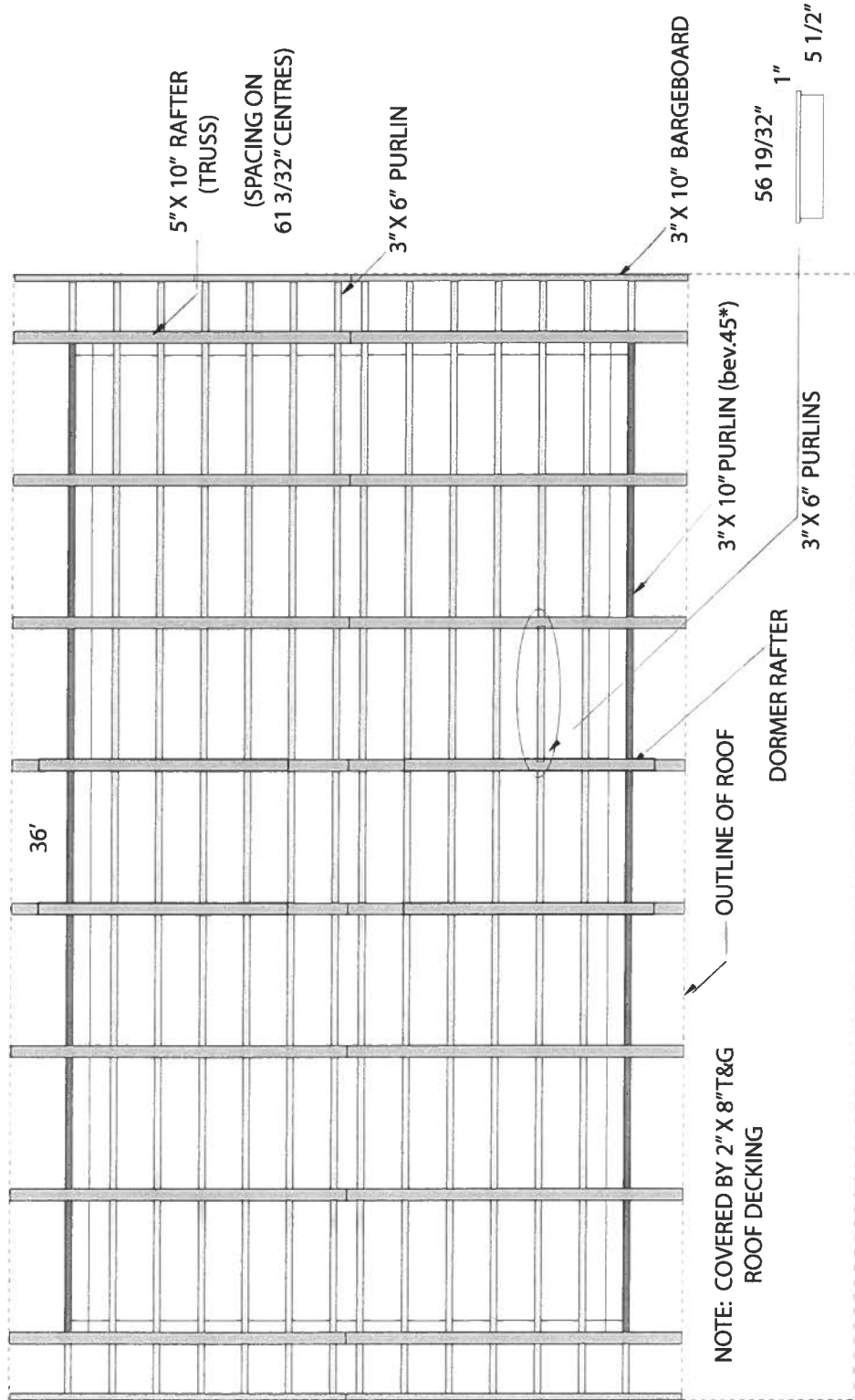
### UPPER FLOOR JOIST LAYOUT



LOG HOME "ALPHA"  
SCALE 1:75  
Sept. 6th, 2018



*Tennessee*  
MILLING



ROOF FRAMING PLAN



LOG HOME "ALPHA"  
 SCALE 1:75  
 Sept. 6th, 2018

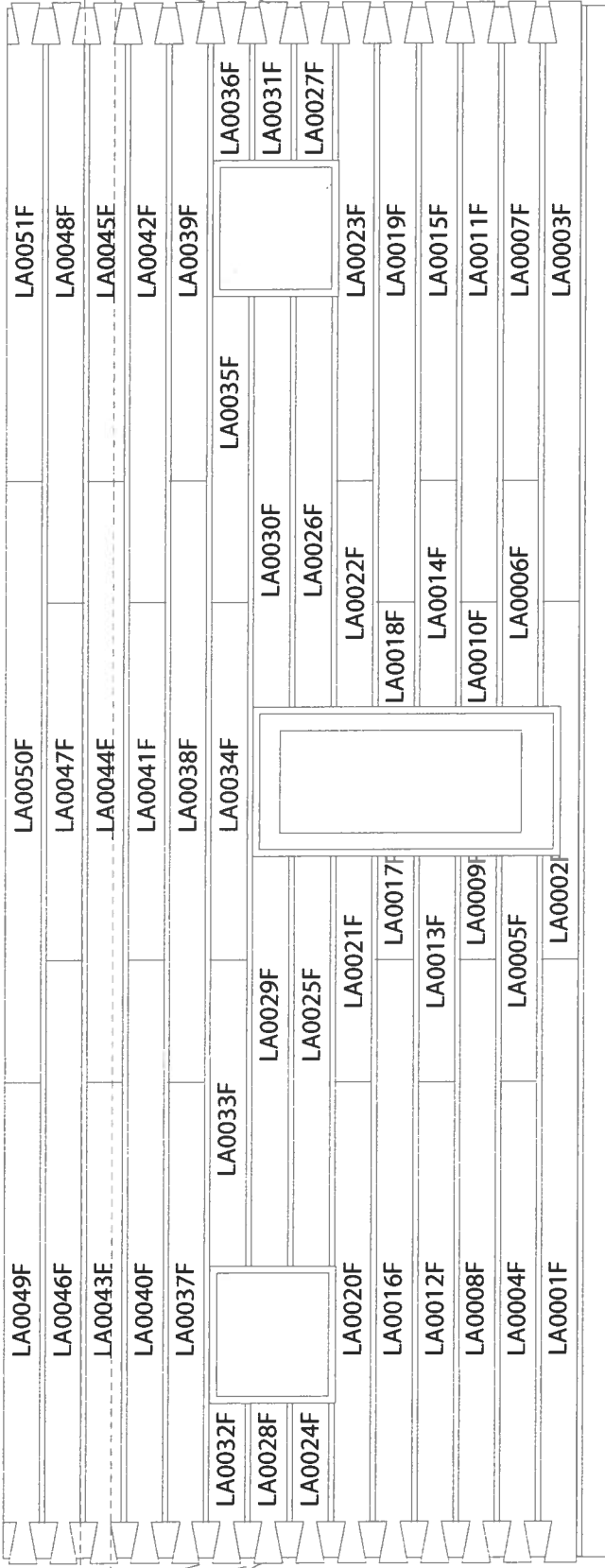


TOTAL: 51 PCS

Scale: 1mm=2"

NOTE: safest to cut lefts and rights rather than flip.

8' 4"



3' 7" 3' 2" 11'

9' 7" 5' 3"

3' 6"

2' 5"

13' 10"

36'

plus 3 1/2" dovetail extension

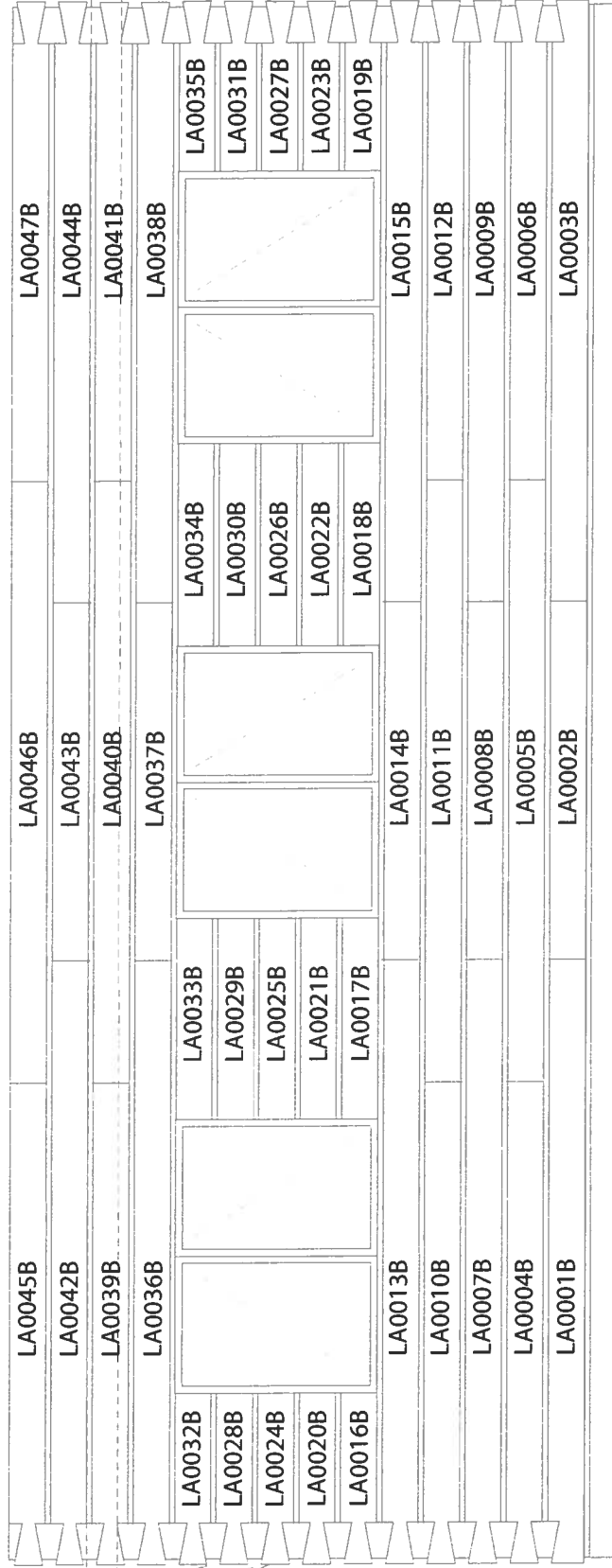
14'

plus 3 1/2" dovetail extension

TOTAL: 47 PCS

NOTE: safest to cut lefts and rights rather than flip.

Scale: 1mm=2"



3' 10"

11'

4' 8"

8' 4"

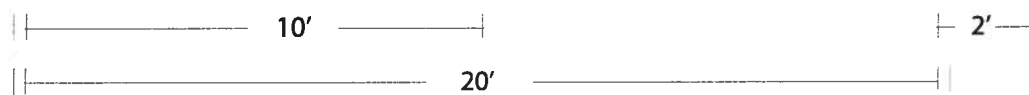
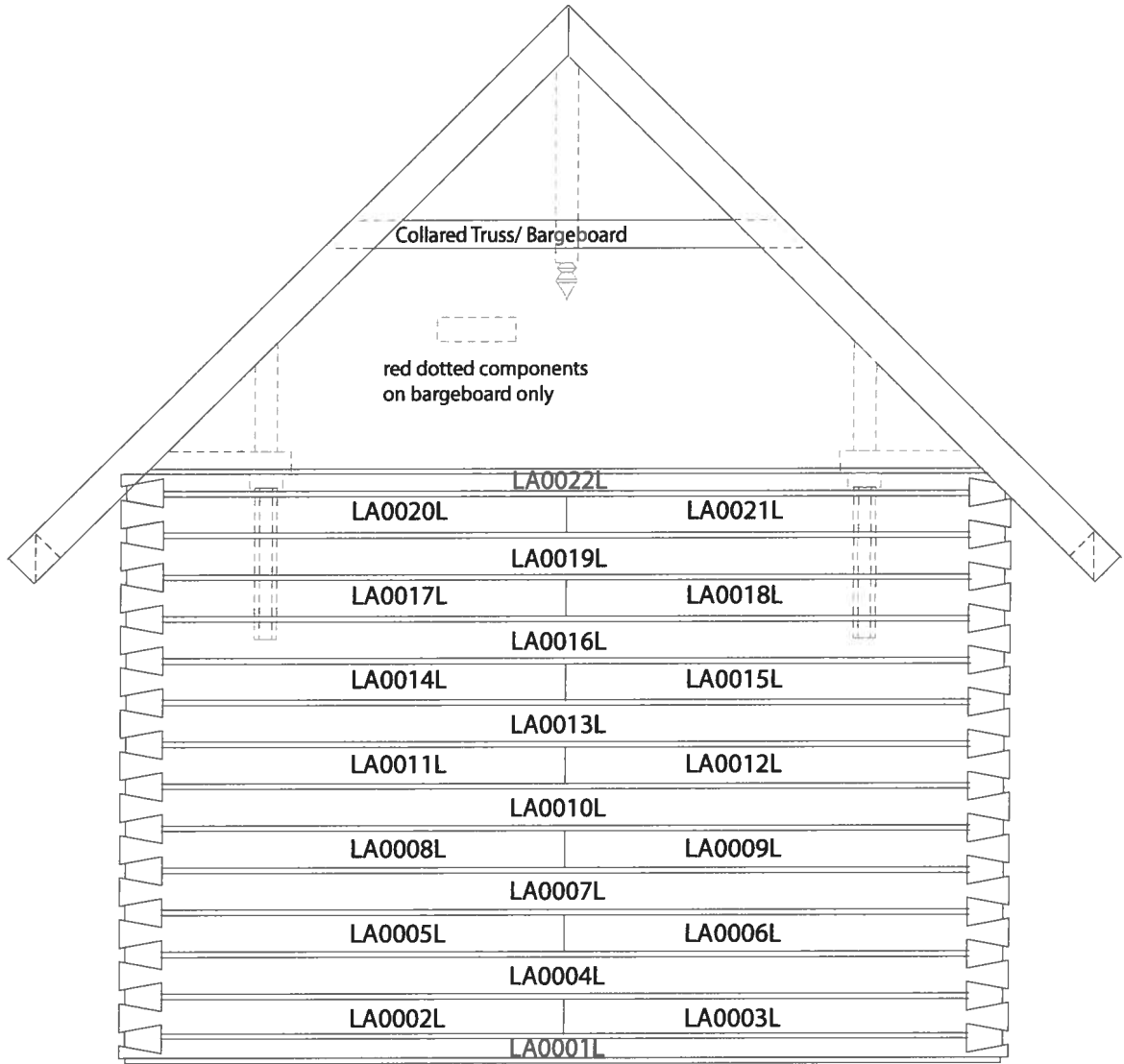
13' 10"

36'

plus 3 1/2" dovetail extension

14'

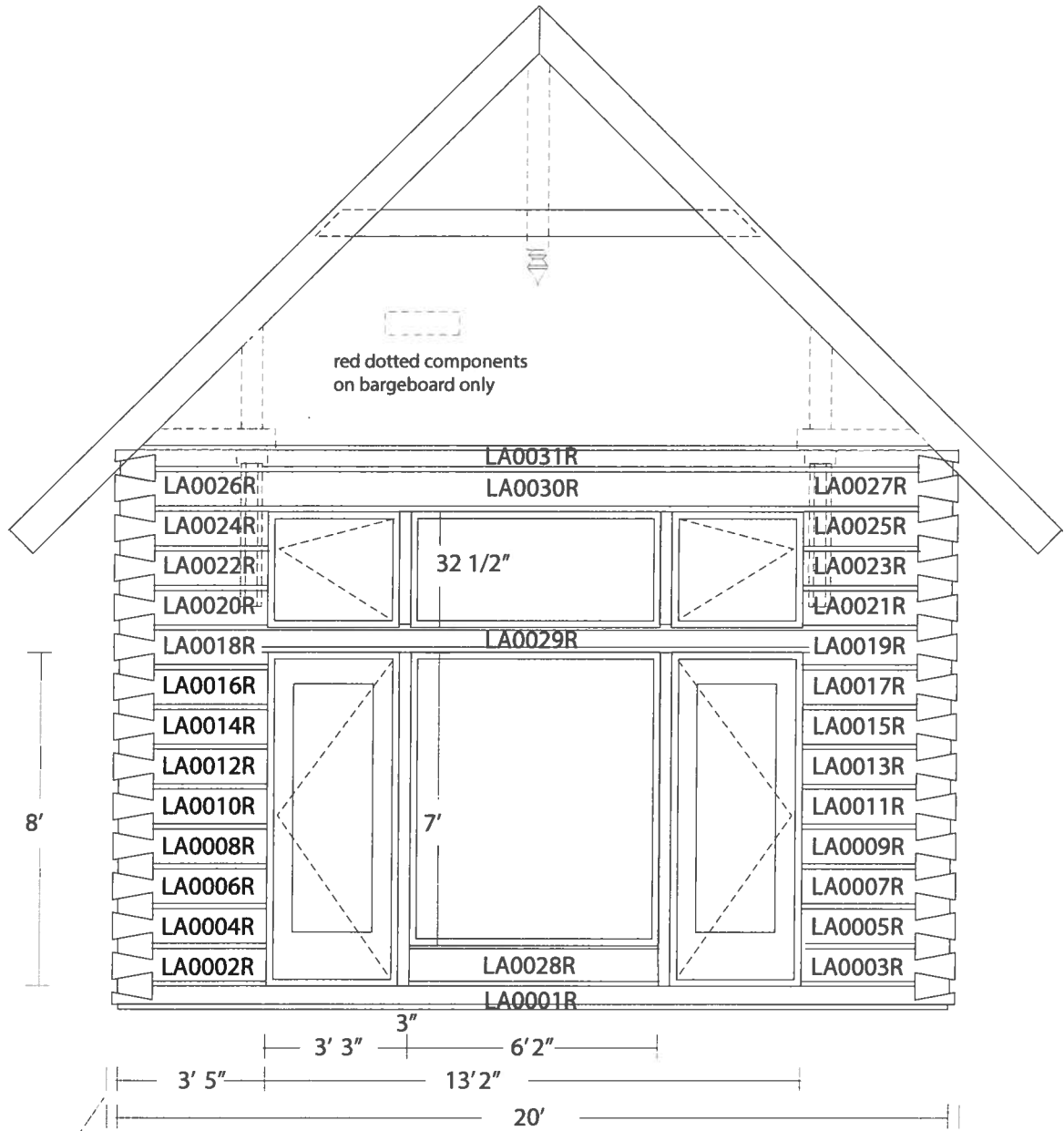
plus 3 1/2" dovetail extension



plus 3 1/2"  
dovetail extension

TOTAL: 22 PCS

NOTE: safest to cut lefts and  
rights rather than flip.



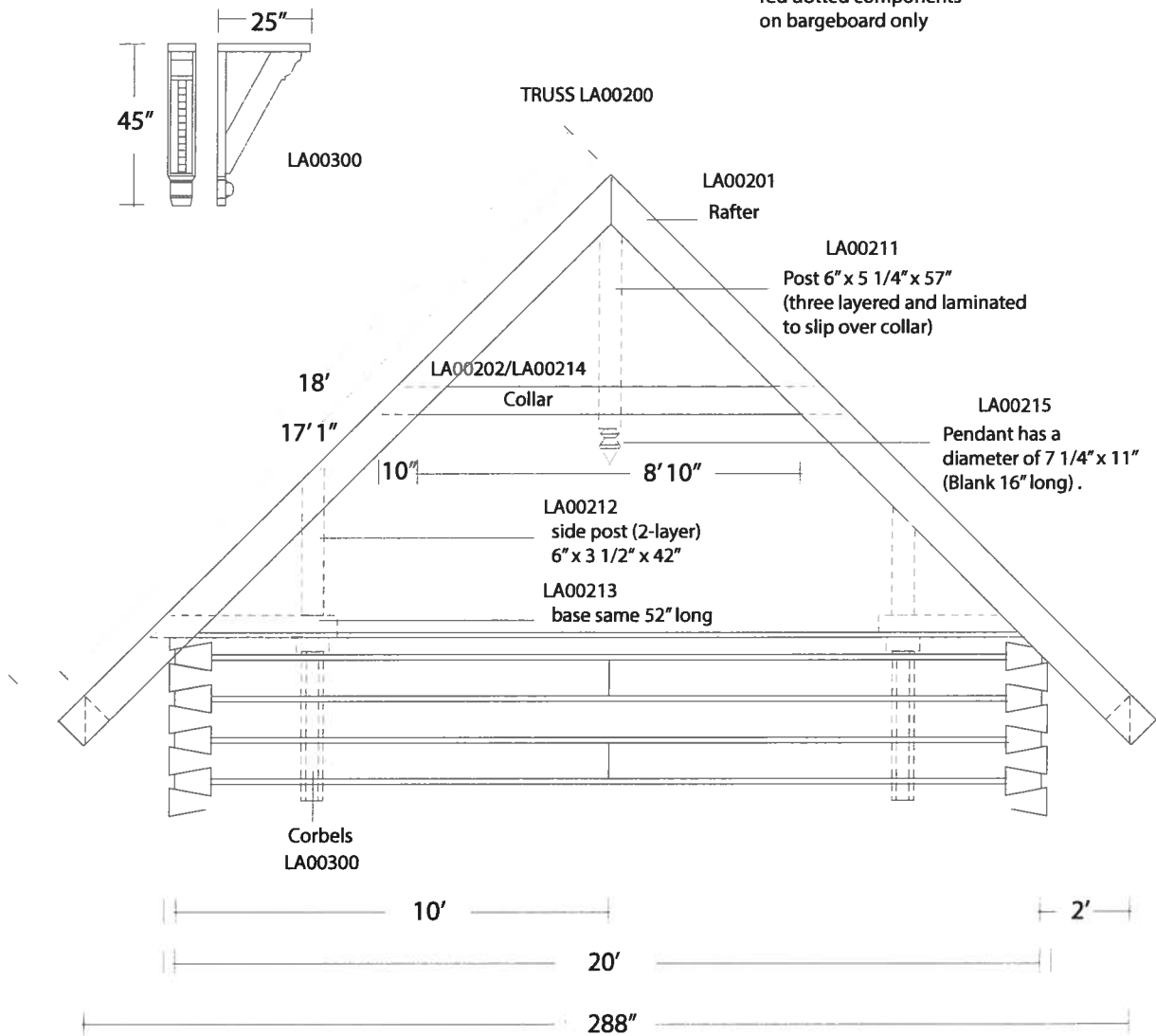
plus 3 1/2"  
dovetail extension

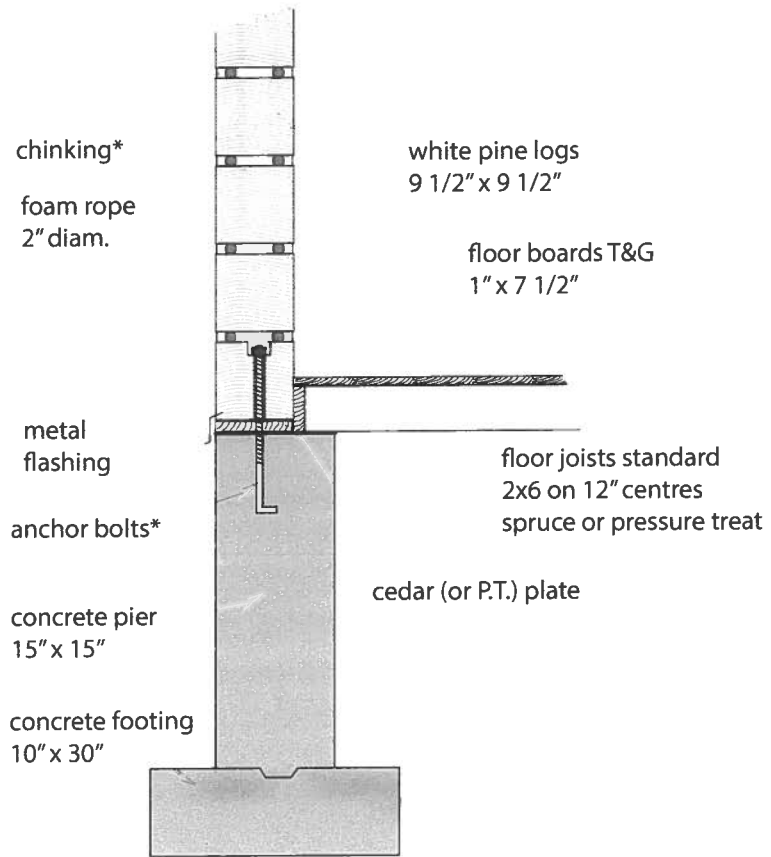
TOTAL: 31 PCS

NOTE: safest to cut lefts and rights rather than flip.

Corbel framing is 1 3/4" x 7 1/4"  
 Diagonals are 3 layers of 1 3/4" pine.

 red dotted components  
 on bargeboard only





*Sennessy*  
MILLING

WALL DETAIL typ.

log on concrete pier

Scale: 1/2" = 1'



