



'SENTINEL'



FRONT ELEVATION

Designed as a true hybrid, this home has the rustic appearance of chinked log and all the drama of a timber frame. It features curved exposed trusses and corbelling and has all the stability and practical electrical, plumbing and insulation advantages of standard 2x6 framing. Half log outers slotted into vertical timbers and chinked on one side, act as cladding and convey the appearance of a pure log structure. All cross-grain wood movement and log settlement issues have been eliminated by this design.

Not an open concept, this full sized home has real hallways and maintains the integrity of each room comfortably. Openings are large and the 'great room' window breathtaking.

Options are available for increasing the living space. If this home is erected higher on a full foundation, for example, then the main roof can be extended to cover more space at grade level.

Materials are provided as a kit, ready to assemble, right to the lock-up stage. Included with all the lumber and framing required for the exterior, roof and loft are: installation hardware, a Vic West insulated roof system (R40), triple glazed vinyl windows and doors, stained and sealed exterior components and premium elastometric chinking.

All exterior corbels and bargeboards are included and meticulously crafted.

The interior plans are suggestions only and Hennessy Milling's staff will do its utmost to help clients reach their design goals as simply and as cost effectively as possible.

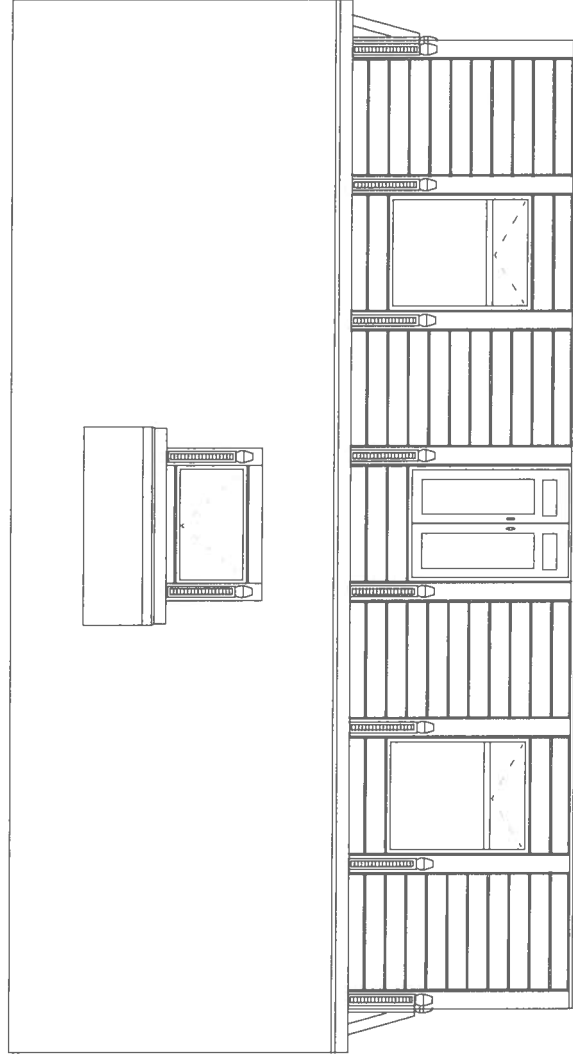
Our website, currently under construction, will provide assembly instructions and as much relevant support detail as possible. For more information, please call Justin Hennessey at (613) 922-6559.



SIDE ELEVATION



"THE SENTINEL"
A Timber Frame Cottage



FRONT ELEVATION

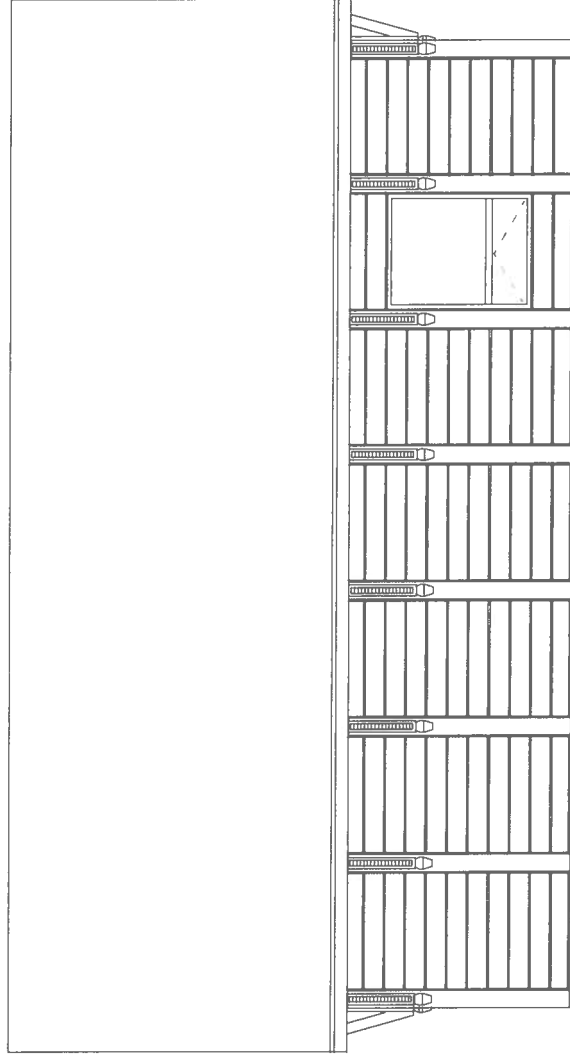
Scale: 1/8" = 1'
September 1, 2018

Design:

Note: Interior square footage
is 1276 square feet.



“TIE SENTINEL”
A Timber Frame Cottage



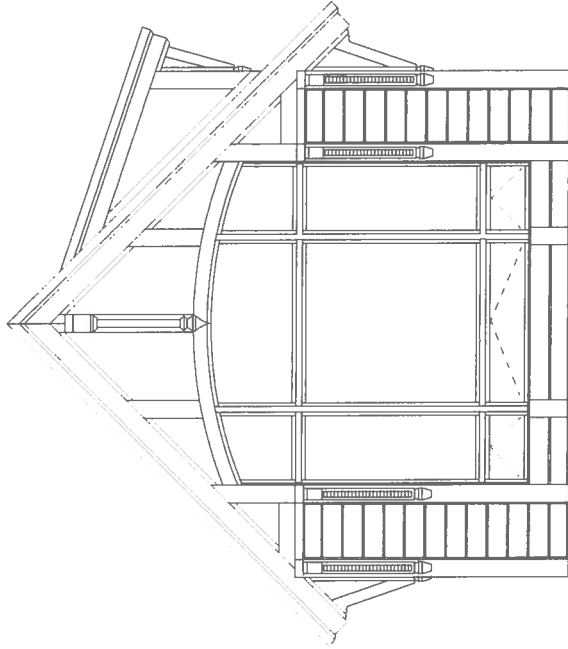
REAR ELEVATION

Scale: 1/8" = 1'
September 1, 2018

Design:



"THE SENTINEL"
A Timber Frame Cottage



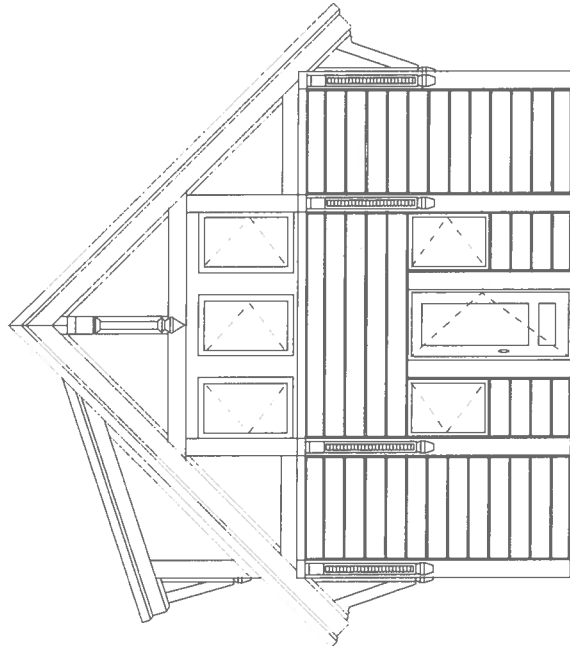
LEFT ELEVATION

Scale: 1/8" = 1'
September 1, 2018

Design:



"THE SENTINEL"
A Timber Frame Cottage

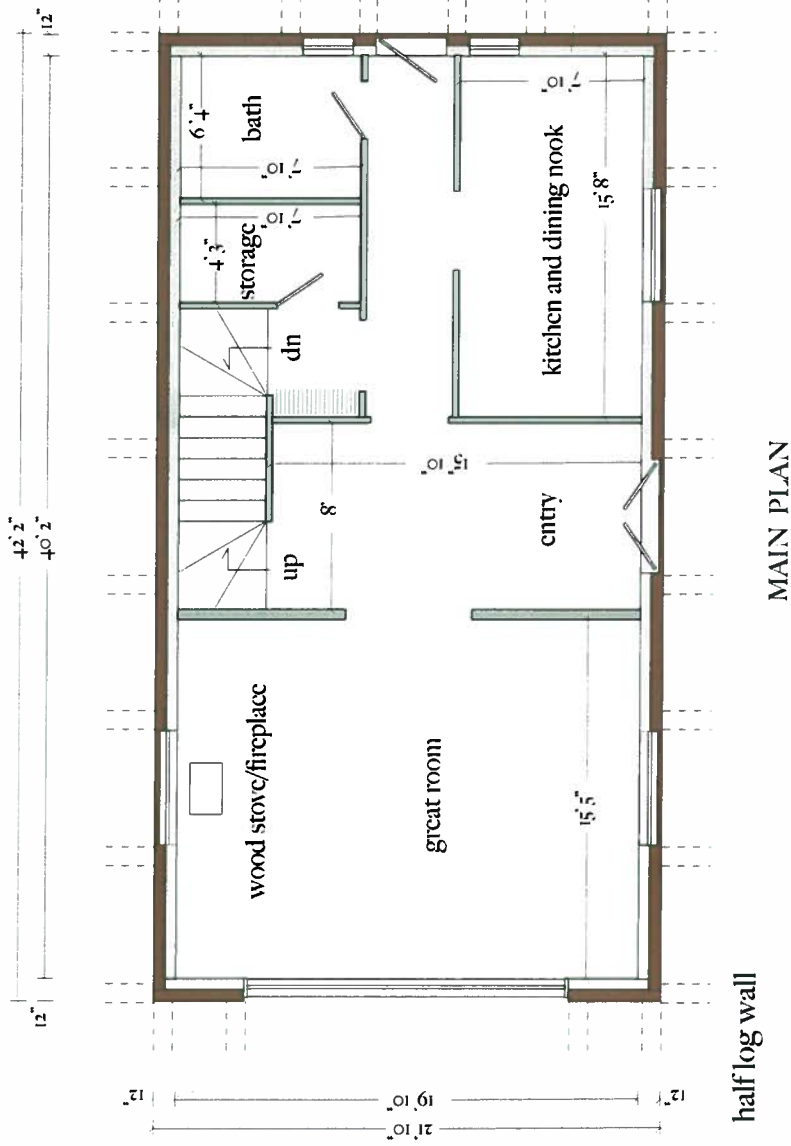


RIGHT ELEVATION

Scale: 1/8" = 1'
September 1, 2018

Design:

“THE SENTINEL”
A Timber Frame Cottage



post locations
typ. (5x10)

wall (sheathed 2x6)

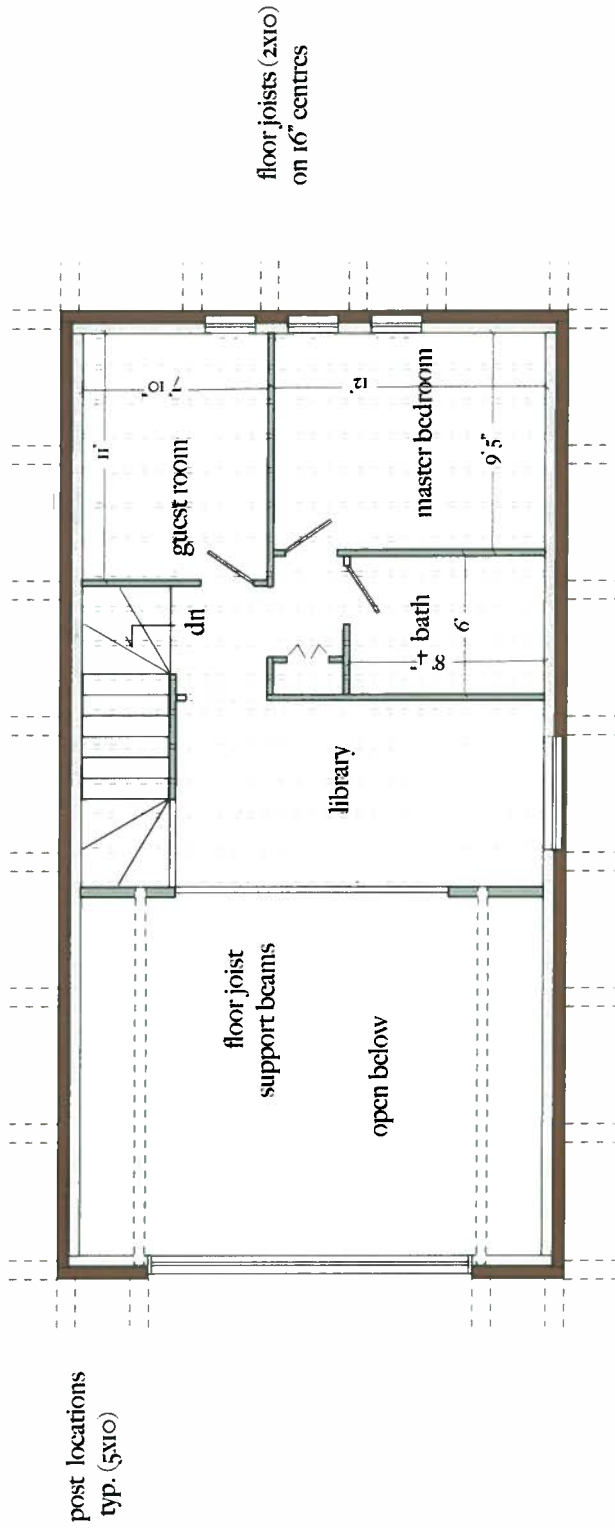
half log wall

MAIN PLAN

Scale: 1/8" = 1'
September 1, 2018

Design: 


Note: Main floor (platform)
and stairs by client. Main floor
square footage is 798.8 (19.887 x 40.167).

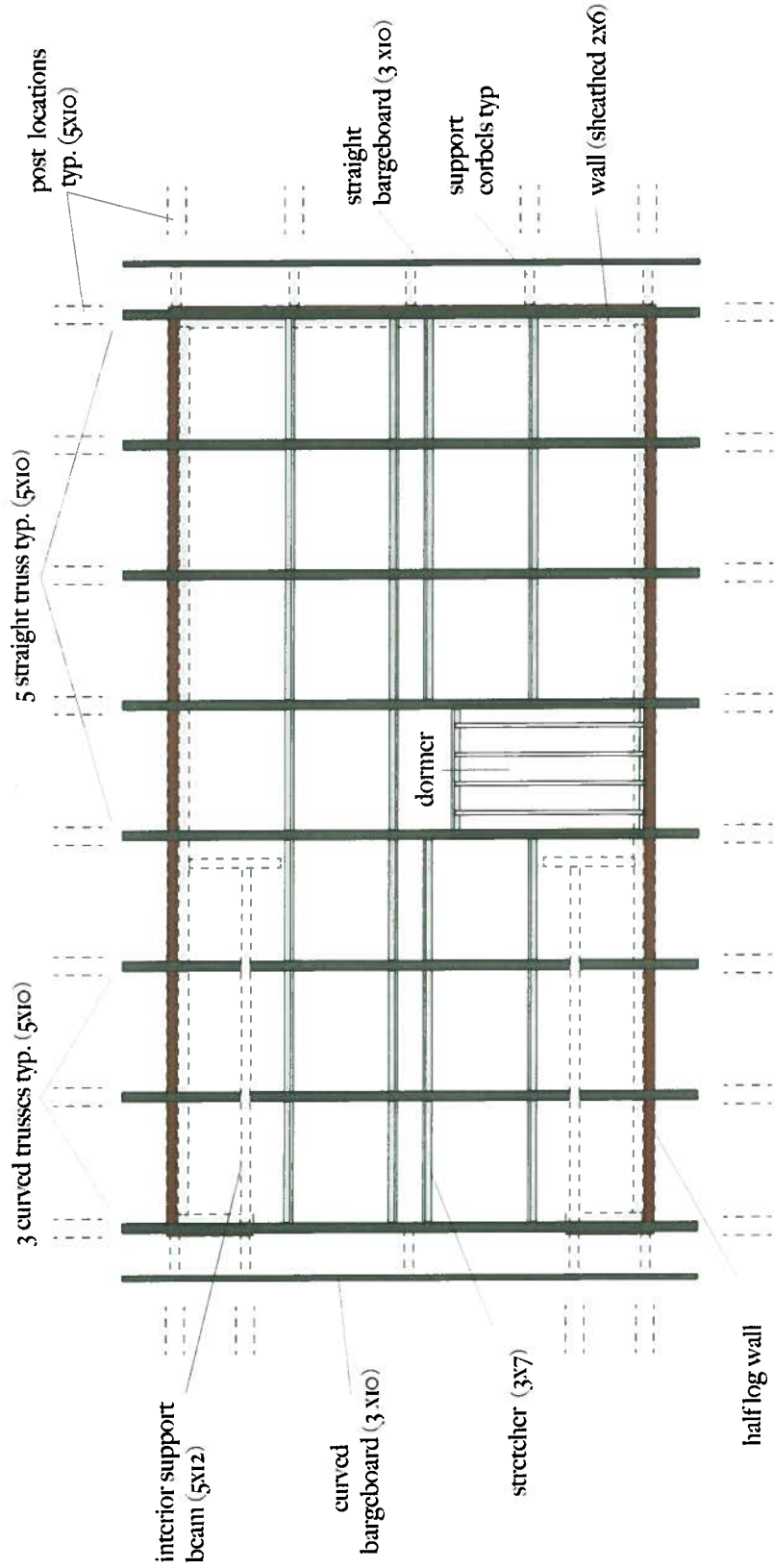


UPPER PLAN

Note: Fir (3/4 ply) sub-floor decking provided. Loft square footage is 477 square feet (19.887' x 24').

Scale: 1/8" = 1'
September 1, 2018

Design: 



Scale: 1/8" = 1'

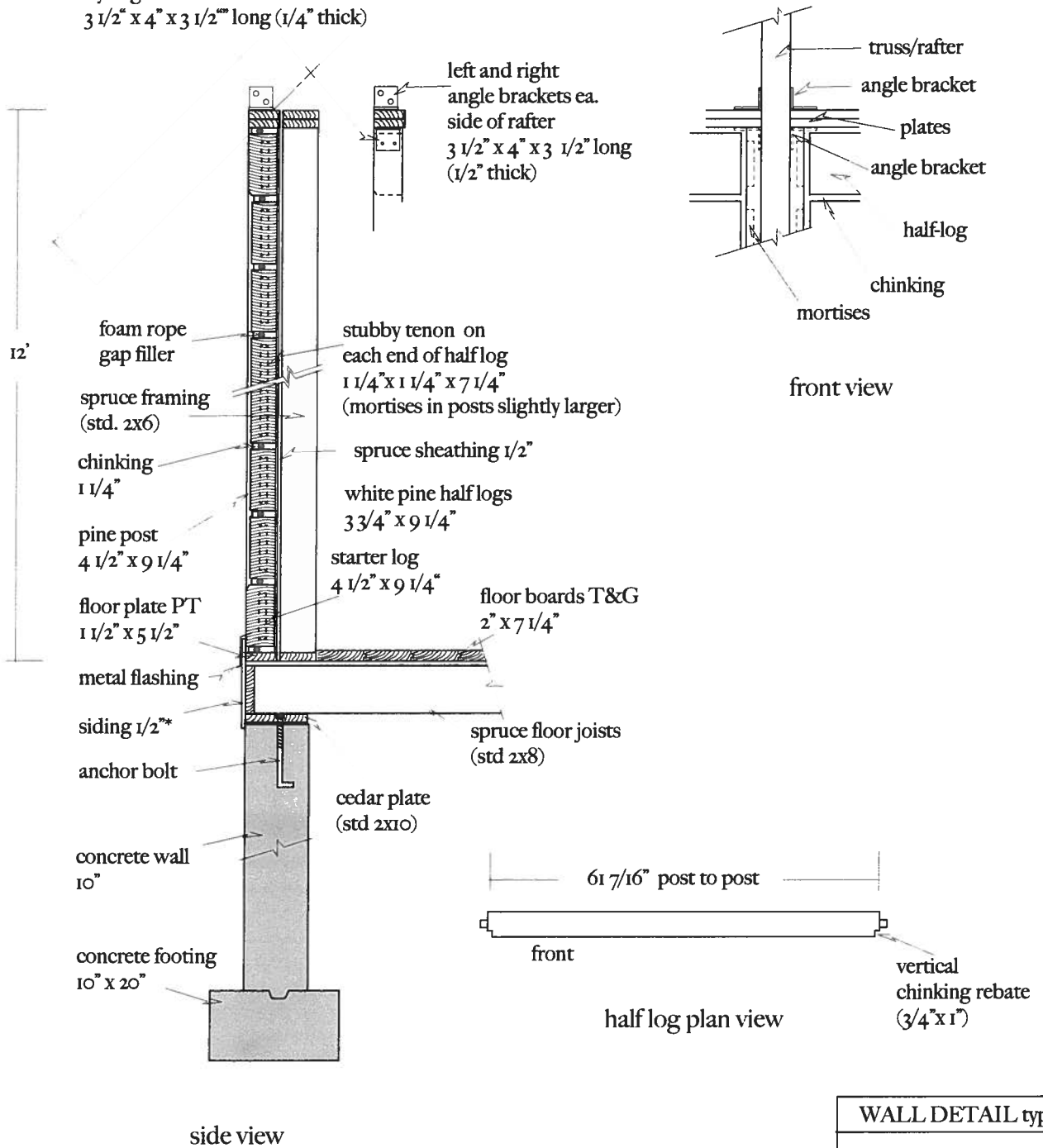
September 1, 2018

Design:

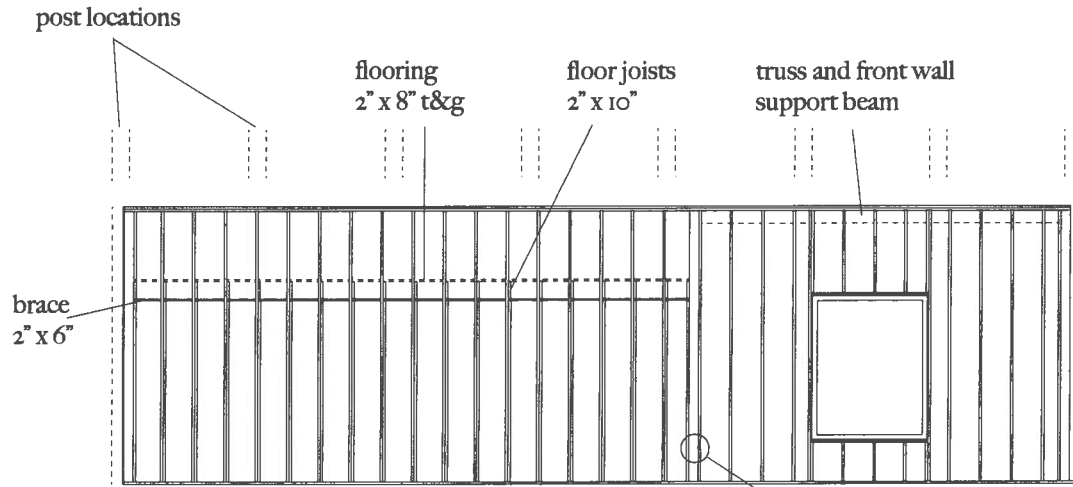
floor joists (2x10)
on 16" centres

Note: Roof to be decked with (2 x8 t&g) and covered with insulated metal roof panels. Roof Square footage is 1777 sq. ft. [(19.25x46.167) x 2].

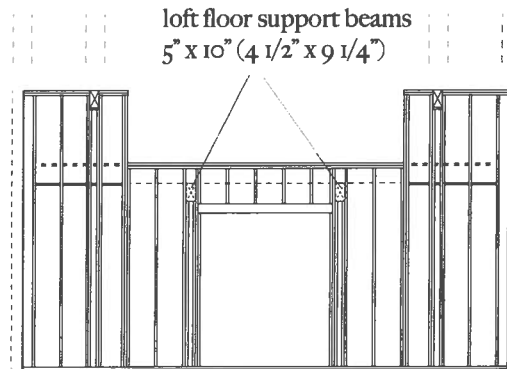
pine post connected
to plates at top and
bottom and on both sides
by angle bracket
3 1/2" x 4" x 3 1/2" long (1/4" thick)



WALL DETAIL typ.
half log/concrete fdn.
Scale: 1/2" = 1'



back wall (2" x 6") framing detail

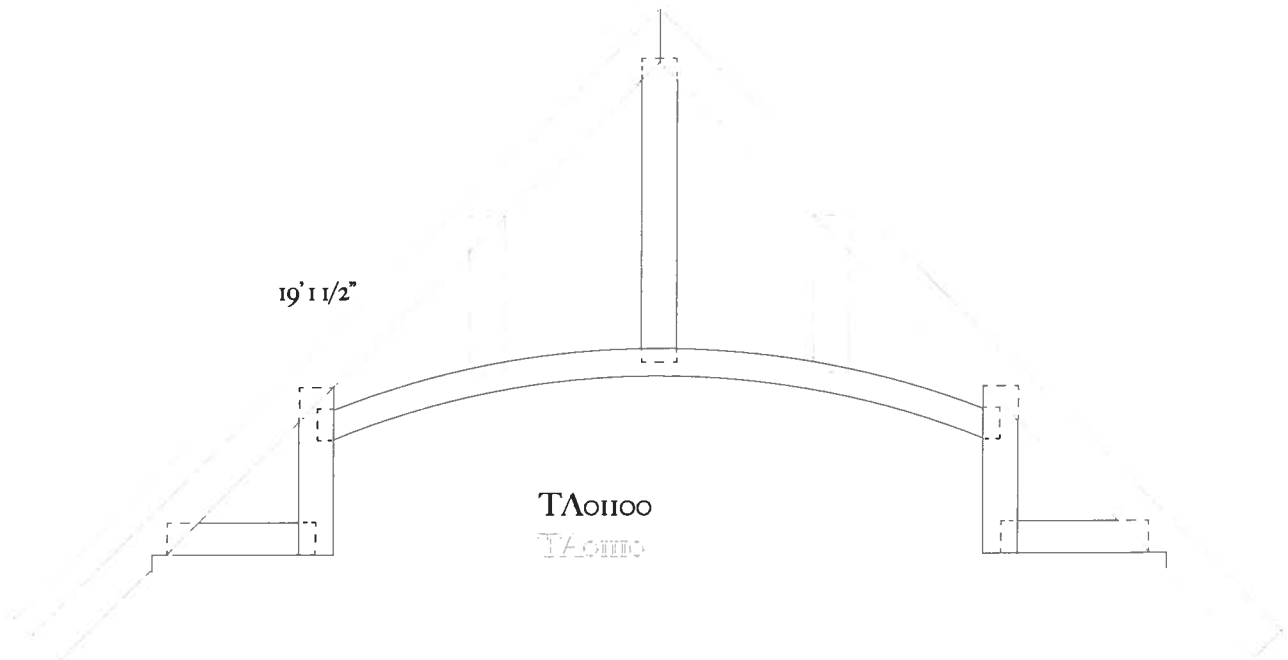
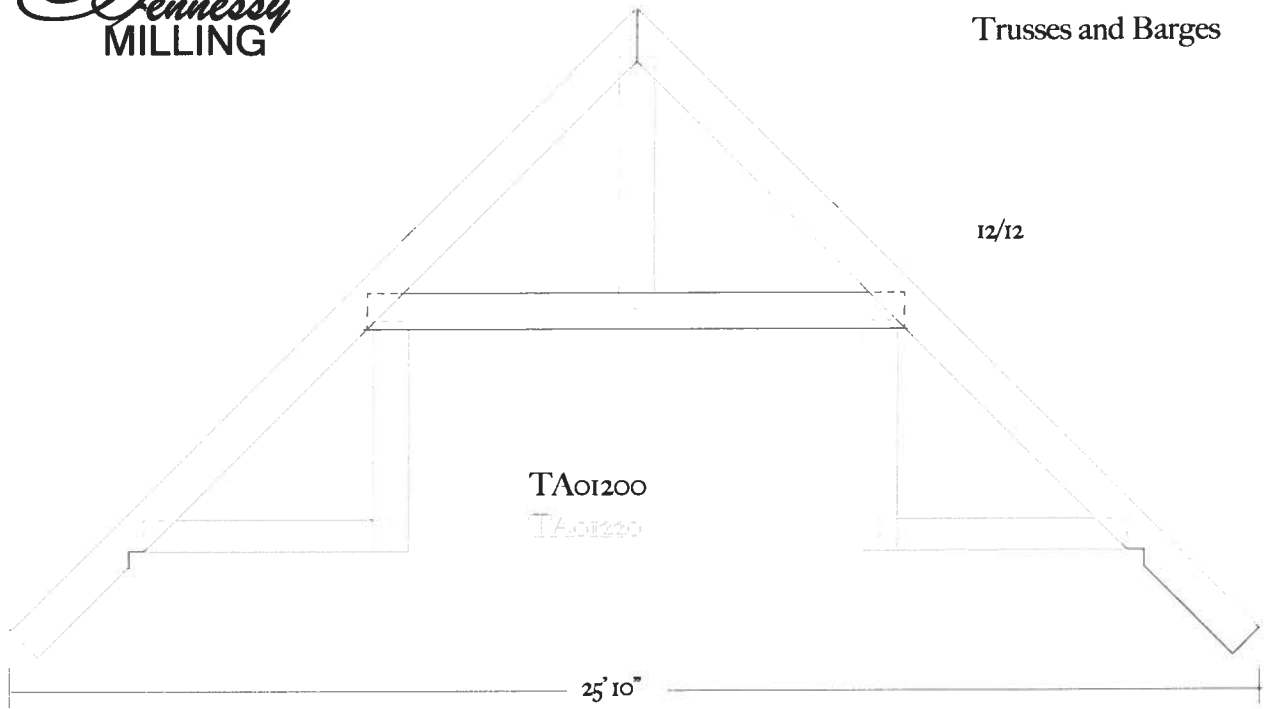


entry/great room wall (2" x 6") framing detail

FRAME DETAIL

half log/concrete fdn.

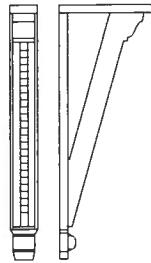
Scale: 1/8" = 1'



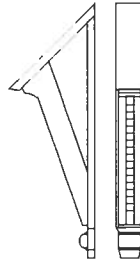
**TIMBER FRAME
HOME**

Corbel framing is 1 3/4" x 7 1/4"
Diagonals are 3 layers of 1 3/4" pine.

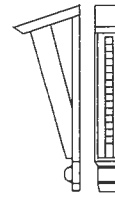
TA02200



TA02100



TA02500



One turned (applique) king post split in half and
with one side cut, shortened and rejoined.



TA02300



TA02400

Tennessee
MILLING

Corbels/King Posts

Select Pine

Scale: 1/4" = 1'

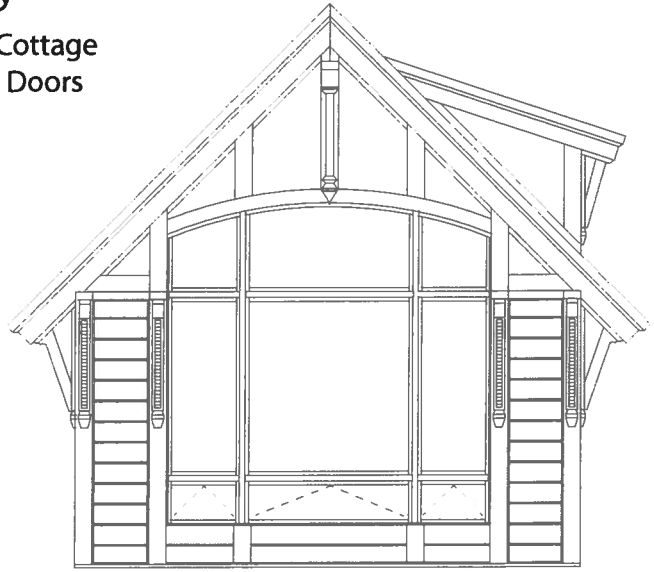
ITEM #	NAME	DESCRIPTION	DIMENSIONS (Inches)	QTY	NOTES
TA00100	Floor Plate	PT 2x6	1 1/2 x 5 1/2 x 144	6	order 4 tens and 8 twelves
TA00101	Floor Plate	PT 2x6	1 1/2 x 5 1/2 x 118	2	
TA00102	Floor Plate	PT 2x6	1 1/2 x 5 1/2 x 109	4	
TA00200	Main Post	Pine 5x10	4 1/2 x 9 1/4 x 139	14	mortised 2 sides
TA00201	Corner Post	Pine 5x10	4 1/2 x 9 1/4 x 139	4	mortised 1 side
TA00202	Half Post	Pine 5x5	4 1/2 x 4 3/4 x 139	4	mortised 1 side
TA00203	Door Post	Pine 5x10	4 1/2 x 9 1/4 x 86 1/16	2	mortised 2 sides
TA00204	Window Post	Pine 5x10	4 1/2 x 9 1/4 x 22 1/2	2	mortised 2 sides
TA00300	Upper Plate right	Pine 4x6	3 1/2 x 5 1/2 x 262	1	2 layers lapped of 1 3/4 x 5 1/2
TA00301	Upper Plate left	Pine 4x6	3 1/2 x 5 1/2 x 44	2	
TA00302	Upper Plate I fr/bk	Pine 4x6	3 1/2 x 5 1/2 x 212	2	
TA00303	Upper Plate II fr/bk	Pine 4x6	3 1/2 x 5 1/2 x 146	4	
TA00304	Upper Plate III fr/bk	Pine 4x6	3 1/2 x 5 1/2 x 24	8	
TA00400	Half Log Siding Reg	Pine 4x10	3 3/4 x 9 1/4 x 63 15/16	140	
TA00400-F	Half Log Siding Reg	Pine 5x10	4 1/2 x 9 1/4 x 63 15/16	13	
TA00401	Half Log Siding Rl	Pine 4x10	3 3/4 x 9 1/4 x 34	24	F's have upper edge bevel 5/8
TA00401-F	Half Log Siding Rl	Pine 5x10	4 1/2 x 9 1/4 x 34	2	
TA00402	Half Log Siding Rl	Pine 4x10	3 3/4 x 9 1/4 x 164 1/2	1	inc. tenons
TA00402-F	Half Log Siding Rl	Pine 5x10	4 1/2 x 9 1/4 x 164 1/2	1	
TA00403	Half Log Siding Rr	Pine 4x10	3 3/4 x 9 1/4 x 52 1/2	24	1 1/4 x 1 1/4 x 8 both ends
TA00403-F	Half Log Siding Rr	Pine 5x10	4 1/2 x 9 1/4 x 52 1/2	2	
TA00404	Half Log Siding Rr	Pine 4x10	3 3/4 x 9 1/4 x 127 1/2	4	
TA00405	Half Log Siding Rr	Pine 4x10	3 3/4 x 9 1/4 x 35 3/4	6	
TA00405-F	Half Log Siding Rr	Pine 5x10	4 1/2 x 9 1/4 x 35 3/4	2	
TA00500	Door Frame Right	Pine 2x10	1 3/4 x 9 1/4	1	36w x 84 3/4h
TA00501	Win Frame Right Up	Pine 2x10	1 3/4 x 9 1/4	3	30w x 48h
TA00502	Win Frame Right Dn	Pine 2x10	1 3/4 x 9 1/4	2	30w x 41h
TA00600	Win Frame Left L	Pine 2x10	1 3/4 x 9 1/4	1	36 1/2w x 161h*
TA00601	Win Frame Left R	Pine 2x10	1 3/4 x 9 1/4	1	36 1/2w x 161h*
TA00602	Win Frame Left C	Pine 2x10	1 3/4 x 9 1/4	1	85w x 166h*
TA00700	Win Frame Fr/Bk Dn	Pine 2x10	1 3/4 x 9 1/4	3	57w x 72 3/4h
TA00800	Win Frame Dormer	Pine 2x10	1 3/4 x 9 1/4	1	59w x 36h
TA00900	Door Frame Front	Pine 2x10	1 3/4 x 9 1/4	1	57w x 84 3/4h
TA00901	Large Mullion	Pine 3x10	3 x 9 1/4 x 162*	2/3	
TA00500-W	Door	Steel	32 1/2 x 81 1/4	1	
TA00501-W	Window Right Up	Dk Vinyl	26 1/2 x 44 1/2	3	
TA00502-W	Window Right Dn	Dk Vinyl	26 1/2 x 37 1/2	2	
TA00600-W	Window Left L	Dk Vinyl	33 x 157 1/2	1	opening sizes
TA00601-W	Window Left R	Dk Vinyl	33 x 157 1/2	1	
TA00602-W	Window Left C	Dk Vinyl	81 1/2 x 162 1/2	1	
TA00700-W	Window Fr/Bk Dn	Dk Vinyl	53 1/2 x 69 1/4	3	
TA00800-W	Window Dormer	Dk Vinyl	55 1/2 x 32 1/2	1	Large left elev windows may
TA00900-W	DoubleDoors	Steel	53 1/2 x 81 1/4	1	need to be split into three ea.
TA01000	Bracket Truss to Plate	Custom	see detail	16	
TA01001	Bracket Post to plate	Custom	see detail	64	
TA01002	Frames,Plate Screws	3 1/2" decking	see detail	500	
TA01003	Siding Screws	3" decking	see detail	1000	*curve has R=16'

ITEM #	NAME	DESCRIPTION	DIMENSIONS (Inches)	QTY	NOTES
TA01100	Curved Truss	Pine 5x10	spans 310"	3	12/12 pitch
TA01101	CT Rafters	Pine 5x10	19' 1 1/2"	6	
TA01102	CT Base Curve	Pine 5x10	14' (14' 9") w. tenons	3	
TA01103	CT King Post	Pine 5x10	6' 2" (6' 7 3/4") w. ten.	3	
TA01104	CT Side Post	Pine 3x10	3' 8"	2	for barge only
TA01105	CT Base Side	Pine 5x10	2' 9" (3' 1 1/2") w. ten.	6	
TA01106	CT Mini Post	Pine 5x10	3' 3"	6	
TA01110	Curved Barge*	Pine 3x10	spans 310"	1	Parts match truss
TA01200	ST Truss	Pine 5x10	spans 310"	5	12/12 pitch
TA01201	ST Rafter	Pine 5x10	19' 1 1/2"	10	
TA01202	ST Base	Pine 5x10	11' 6"	5	
TA01203	ST King Post	Pine 3x10	5' (5' 5 3/4") w. ten.	1	for barge only
TA01204	ST Side Post	Pine 5x10	4' 10" (5') w. ten.	10	
TA01205	ST Base Side	Pine 5x10	5' (5' 4 1/2") w. ten.	10	
TA01220	Straight Barge	Pine 3x10	spans 310"	1	Parts match truss
TA01300	Truss Brace	Pine 3x7	68 11/16" (72 11/16")	28	inc. 2" tenons
TA01300	Truss Brace Soffit	Pine 3x7	68 11/16" (72 11/16")	14	inc. 2" tenons
TA01302	Barge Brace	Pine 3x10	21"	12	
TA01310	Dormer Rafter	Pine 2x8	10' 4"	6	
TA01400	Roof Decking	Pine 2x8 t&g	cover est 1800 sq. ft.	?	
TA01500	Ins. Metal Roofing	VW Black Sys. 2000	cover est 1800 sq. ft.	?	Panel length 19' 3"
TA01501	Metal Ridge Fash.	VW Black Sys. 2000	?	48'	R40?
TA01502	Metal Valley Flash.	VW Black Sys. 2000	?	10'	
TA01503	Metal drip Edge End	VW Black Sys. 2000	?	80'	
TA01504	Metal Drip Edge Side	VW Black Sys. 2000	?	100'	
TA01505	Roof Fasteners	VW Black Sys. 2000	?	to suit	
TA02100	Corbels Side	Select Pine	see detail	16	
TA02101	Corbels Sd Framing	Select Pine	see detail	32	
TA02102	Corbels Sd Diagonal	Select Pine	see detail	16	
TA02200	Corbels End	Select Pine	see detail	10	
TA02201	Corbels Ed Framing	Select Pine	see detail	20	
TA02202	Corbels Ed Diagonal	Select Pine	see detail	10	
TA02300	Dec. King Post Left	Select Pine	see detail	1	
TA02400	Dec. King Post Right	Select Pine	see detail	1	
TA02500	Corbels Dormer	Select Pine	see detail	2	
TA02501	Corbels Dorm. Fram.	Select Pine	see detail	4	
TA02502	Corbels Dorm. Diag.	Select Pine	see detail	2	
TA03000	Fram Outer 2x6x12	spruce	1 1/2 x 5 1/2 x 12'	120	est
TA03001	Fram. 2x6x8 Gb/Dm	"	1 1/2 x 5 1/2 x 8'	20	est
TA03002	Framing 2x6x8 OW	"	1 1/2 x 5 1/2 x 8'	36	est
TA03004	Framing 2x4x8 Inter.	"	1 1/2 x 3 1/2 x 8'	166	est
TA03005	Framing 2x4x16 Plat.	"	1 1/2 x 3 1/2 x 16'	30	est
TA03003	Framing 2x6x16 Plat.	"	1 1/2 x 3 1/2 x 16'	24	est
TA03006	Loft Decking	Pine 2x8 t&g	cover est 480 sq. ft.	?	est
TA03100	Wall Sheathing	spruce 1/2" x 4 x8	cover est. 1500 sq. ft.	?	est
TA03200	House Wrap	rolls	cover est. 1500 sq. ft.	?	est
TA03300	Gable Cladding	tan cement board	cover est. 200 sq. ft.	?	est

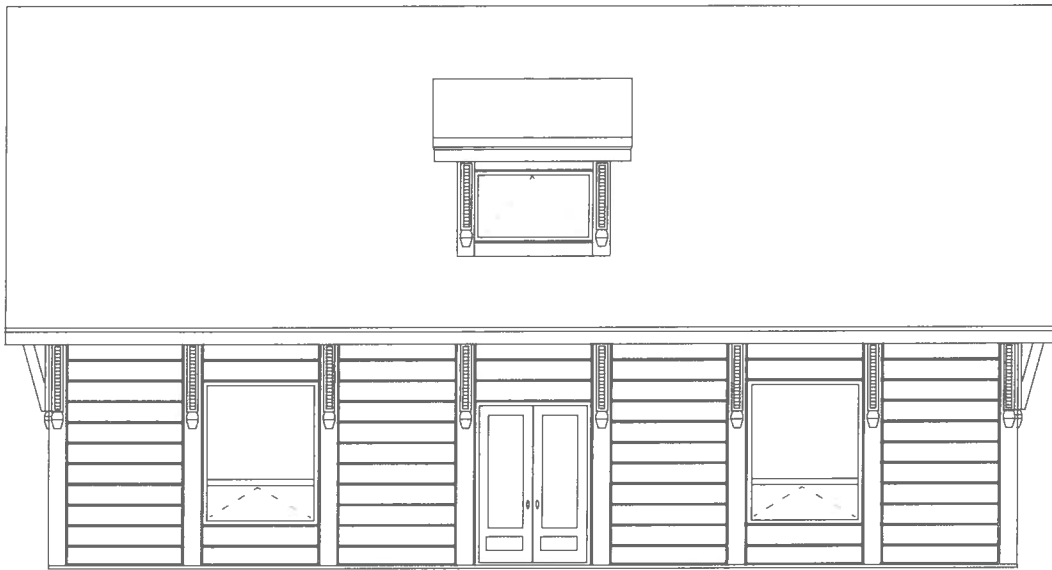
**Hennessy
Timber Frame Cottage
Windows and Doors**



RIGHT ELEVATION



LEFT ELEVATION



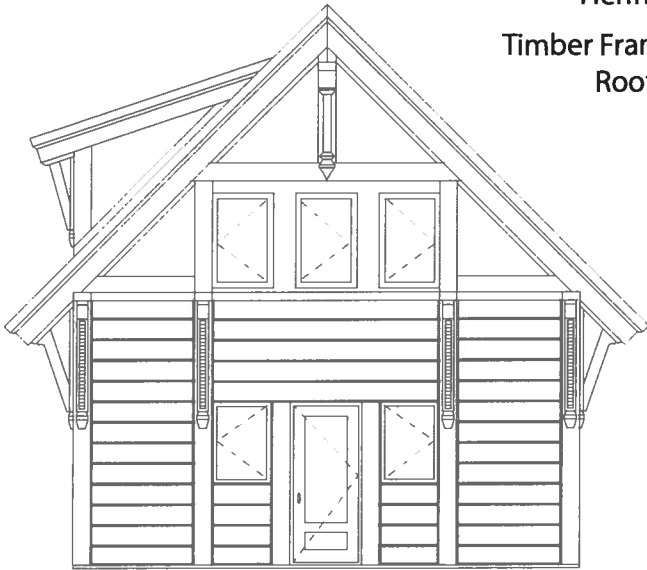
FRONT ELEVATION

opening sizes

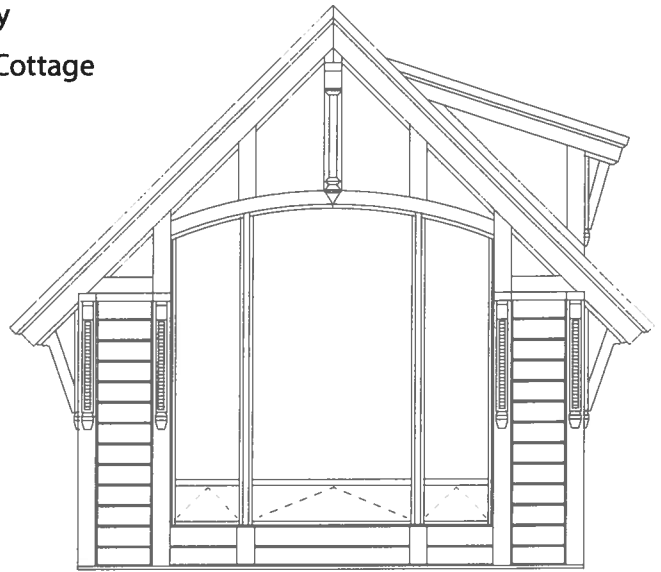
TA00500-D	Door	Steel	32 1/2 x 81 1/4	1
TA00501-W	Window Right Up	Dk Vinyl	26 1/2 x 44 1/2	3
TA00502-W	Window Right Dn	Dk Vinyl	26 1/2 x 37 1/2	2
TA00600-W	Window Left L	Dk Vinyl	33 x 157 1/2	1
TA00601-W	Window Left R	Dk Vinyl	33 x 157 1/2	1
TA00602-W	Window Left C	Dk Vinyl	81 1/2 x 162 1/2	1
TA00700-W	Window Fr/Bk Dn	Dk Vinyl	53 1/2 x 69 1/4	3
TA00800-W	Window Dormer	Dk Vinyl	55 1/2 x 32 1/2	1
TA00900-D	DoubleDoors	Steel	53 1/2 x 81 1/4	1

NOTE: 600 SERIES CAN BE SPLIT INTO TWO OR THREE SEPARATE WINDOWS EACH.

Hennessey
Timber Frame Cottage
Roofing

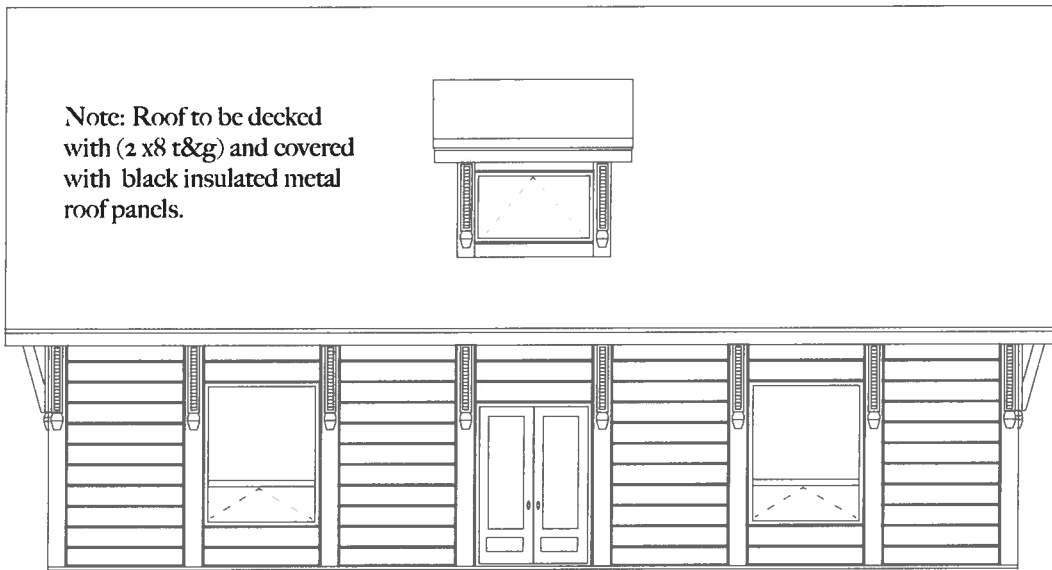
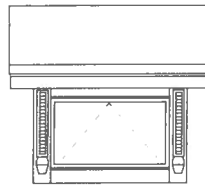


RIGHT ELEVATION



LEFT ELEVATION

Note: Roof to be decked
with (2 x8 t&g) and covered
with black insulated metal
roof panels.



FRONT ELEVATION

Roof dimensions ea. side: 19' 3" x 46' 2"

Dormer dimensions: 8' 4" 10' 4"

Roof Square footage is
1777 sq. ft. [(19.3'x46.167') x 2].

Estimated panel length is 19' 3"

Scale 1/8"=1'